

## Oklahoma Medical Growers

2930 N Florence Ave  
Tulsa, OK 74110  
david@oklahomamedicalgrowers.com  
(918) 289-1053  
Lic. #

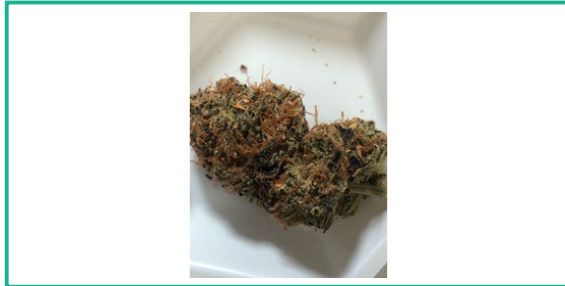
Sample: 2001OKCTL0281.0807

Strain: Super Skunk  
Batch#: 72; Batch Size: g  
Sample Received: 01/17/2020; Report Created: 01/19/2020

## Super Skunk

Plant, Flower - Cured, Indoor  
Harvest Process Lot:

To verify authenticity of this report please scan the QR code to see the original certificate of analysis data.



## Summary

Test	Date Tested	Result
Cannabinoids		Complete
Moisture		Complete
Water Activity		Complete
Terpenes		Complete
Microbials		Pass
Pesticides		Pass
Heavy Metals		Pass
Foreign Matter		Pass

## Cannabinoids

20.57%

Total THC

0.27%

Total CBD

23.41%

Total Cannabinoids

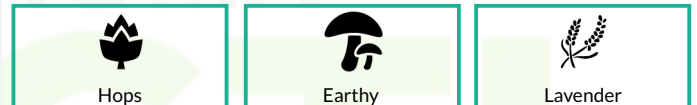
Analyte	LOQ	Mass	Mass
	%	%	mg/g
THCa	0.01	20.54	205.4
Δ9-THC	0.01	2.56	25.6
Δ8-THC	0.01	ND	ND
THCVa		ND	ND
CBDa	0.01	0.31	3.1
CBD	0.01	ND	ND
CBDV	0.01	ND	ND
CBN	0.01	ND	ND
CBGa	0.01	ND	ND
CBG	0.01	ND	ND
CBC	0.01	ND	ND
<b>Total</b>		<b>23.41</b>	<b>234.1</b>

Total THC = THCa \* 0.877 + d9-THC  
Total CBD = CBDa \* 0.877 + CBD  
LOQ = Limit of Quantitation; The reported result is based on a sample weight with the applicable moisture content for that sample; Unless otherwise stated all quality control samples performed within specifications established by the Laboratory.

13.6%  
Complete  
Moisture

NR  
Complete  
Water Activity

## Terpenes



Analyte	LOQ	Mass	Mass
	%	%	mg/g
β-Myrcene		1.62	16.2
Ocimene		1.05	10.5
Linalool		0.54	5.4
Terpinolene		0.52	5.2
β-Caryophyllene		0.46	4.6
α-Pinene		0.20	2.0
δ-Limonene		0.14	1.4
δ-3-Carene		0.10	1.0
α-Humulene		NR	NR
Camphene		NR	NR
Fenchol		NR	NR
Isopulegol		NR	NR
p-Cymene		NR	NR
<b>Total</b>		<b>4.63</b>	<b>46.3</b>

LOQ = Limit of Quantitation; The reported result is based on a sample weight with the applicable moisture content for that sample; Unless otherwise stated all quality control samples performed within specifications established by the Laboratory.  
Notes:

## Oklahoma Medical Growers

2930 N Florence Ave  
Tulsa, OK 74110  
david@oklahomamedicalgrowers.com  
(918) 289-1053  
Lic. #

Sample: 2001OKCTL0281.0807

Strain: Super Skunk  
Batch#: 72; Batch Size: g  
Sample Received: 01/17/2020; Report Created: 01/19/2020

## Super Skunk

Plant, Flower - Cured, Indoor  
Harvest Process Lot:

To verify authenticity of this report please scan the QR code to see the original certificate of analysis data.



**13.6%**

Complete

Moisture

**NR**

Complete

Water Activity

## Microbials

Pass

Analyte	Limit CFU/g	Mass CFU/g	Status
Aerobic Bacteria		Absent	Pass
Coliforms		Absent	Pass
E. Coli		Absent	Pass
Salmonella		Absent	Pass
Staphylococcus aureus		Absent	Pass
Yeast & Mold		Absent	Pass

LOQ = Limit of Quantitation; TNC = Too Numerous to Count; Unless otherwise stated all quality control samples performed within specifications established by the Laboratory

## Pesticides

Pass

Analyte	LOQ PPM	Limit PPM	Mass PPM	Status
Abamectin		0.500	ND	Pass
Azoxystrobin		0.500	ND	Pass
Bifenazate		0.500	ND	Pass
Etoxazole		0.500	ND	Pass
Imazalil		0.500	ND	Pass
Imidacloprid		0.500	ND	Pass
Malathion		0.500	ND	Pass
Myclobutanil		0.500	ND	Pass
Permethrin		0.500	ND	Pass
Spinosyn AD		0.500	ND	Pass
Spiromesifen		0.500	ND	Pass
Spirotetramat		0.500	ND	Pass
Tebuconazole		0.500	ND	Pass

LOQ = Limit of Quantitation; The reported result is based on a sample weight with the applicable moisture content for that sample; Unless otherwise stated all quality control samples performed within specifications established by the Laboratory.

## Heavy Metals

Pass

Analyte	LOQ PPB	Limit PPB	Mass PPB	Status
Arsenic		0	ND	Pass
Cadmium		0	ND	Pass
Lead		1	ND	Pass
Mercury		0	ND	Pass

LOQ = Limit of Quantitation; The reported result is based on a sample weight with the applicable moisture content for that sample; Unless otherwise stated all quality control samples performed within specifications established by the Laboratory.

